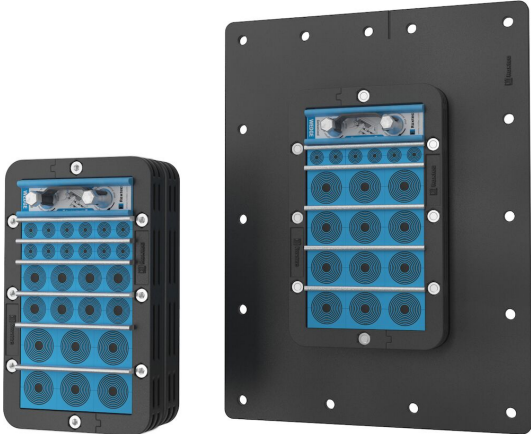


Roxtec KFO transit

Area efficient light-weight transit.

The Roxtec KFO transit has a light-weight composite frame suitable for constructions where it is important to keep weight down to a minimum. The frame is openable and can be installed around already routed cables. The sealing modules are adaptable to cables and pipes of different sizes and can be used to build in spare capacity in the transit.

- Light-weight
- Area efficient
- Perfect for retrofit
- Quick and easy to install
- Allows pre-terminated cables



Product characteristics



IP/UL NEMA

Structure of installation



Cabinets & enclosures

Ratings & certificates

Tightness

- IP 66/67

Frame dimensions

mm/kg

The frame variants below are a limited selection. For the full range of frames and configurations, please visit [roxtec.com](https://www.roxtec.com).

Product	Frame openings	Packing space	External dimensions WxHxD	Aperture dimensions w x h	Weight	Art. no
KFO 6x1	1	120 x 180	159 x 260 x 52	123(+0.5/-0.5) x 223(+0.5/-0.5)	1	KFO0000060059
KFO 6x1 WITH FLANGE	1	120 x 180	319 x 420 x 59	170(+2/-2) x 270(+2/-2)	1.6	KFO1000060059

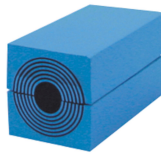


Sealing components

Sealing components



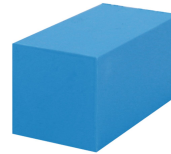
Lubricant



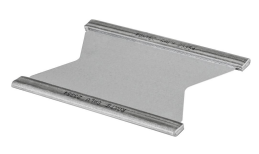
RM module with Multidiameter™



Wedge & Wedgekit



RM solid compensation module



Stayplate



Sealing kit

For detailed information, please visit [roxtec.com](https://www.roxtec.com).

The product information provided by Roxtec does not release the purchaser of the Roxtec system, or part thereof, from the obligation to independently determine the suitability of the products for the intended process, installation and/or use.

Roxtec gives no guarantee for the Roxtec system or any part thereof and assumes no liability for any loss or damage whatsoever, whether direct, indirect, consequential, loss of profit or otherwise, occurred or caused by the Roxtec systems or installations containing components not manufactured by an authorized manufacturer and/or occurred or caused by the use of the Roxtec system in a manner or for an application other than for which the Roxtec system was designed or intended.

Roxtec expressly excludes any implied warranties of merchantability and fitness for a particular purpose and all other express or implied representations and warranties provided by statute or common law. User determines suitability of the Roxtec system for intended use and assumes all risk and liability in connection therewith. In no event shall Roxtec be liable for indirect, consequential, punitive, special, exemplary or incidental damages or losses.

The Roxtec products are offered and sold in accordance with the conditions of the Roxtec General Terms of Sales. The latest version of the Roxtec General Terms of Sales can be downloaded from <https://www.roxtec.com/en/about-us/about-roxtec/general-terms-of-sales/>

We reserve the right to make changes to the product and technical information without further notice. Any errors in print or entry are no claims for indemnity. The content of this publication is the property of Roxtec International AB and is protected by copyright.

This document was generated on: 2024-04-27